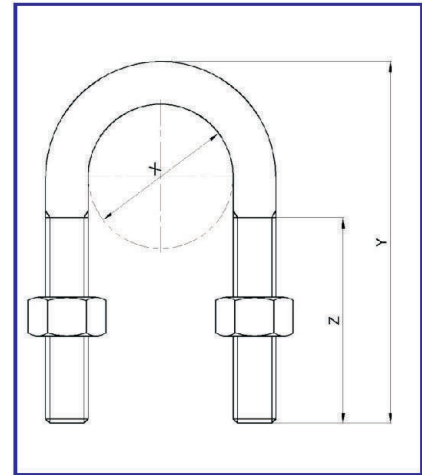
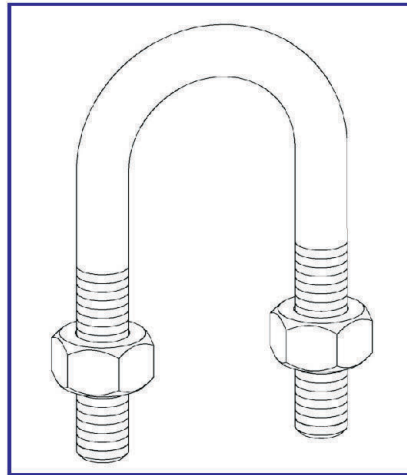


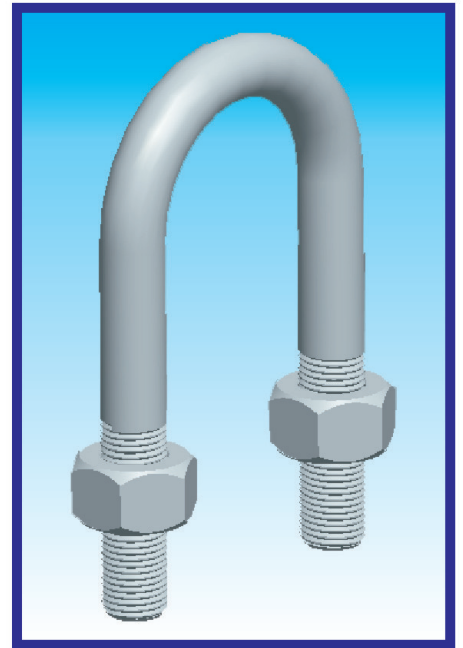
U Bolt

Catalogue Number : 8000104 : Rev. 01 Dated 07-10-2014



SELECTION TABLE (Table No: B-09-01)

Model No.	Size	Threaded Connection	Dimensions (mm)		
			X	Y	Z
SUB022	½"	M6	21	42	25
SUB028	¾"	M6	27	48	25
SUB035	1"	M6	34	54	25
SUB042	1 ¼"	M6	43	62	25
SUB048	1 ½"	M8	48	75	35
SUB060	2"	M8	60	87	35
SUB075	2 ½"	M8	76	103	35
SUB090	3"	M10	89	122	45
SUB115	4"	M10	115	148	45
SUB140	5"	M12	140	180	50
SUB160	6"	M12	168	205	50
SUB219	8"	M12	219	260	50
SUB273	10"	M16	273	324	70
SUB324	12"	M16	324	375	70
SUB356	14"	M16	356	407	70
SUB406	16"	M16	406	458	70
SUB457	18"	M20	457	522	85
SUB508	20"	M20	508	573	85
SUB558	22"	M20	559	624	85
SUB610	24"	M20	610	675	85
SUB660	26"	M24	664	738	100
SUB710	28"	M24	716	789	100
SUB762	30"	M24	767	840	100
SUB915	36"	M24	920	995	100



U Bolt

1. Compliance:

- a) Federal Specification AS-A-1192 (Type 1)
- b) MSS-SP58 (Type 1)
- c) MSS-SP69
- d) WW-H-171E (Type 1)
- e) EG-ASTMB 633 SC3, BS 1706 FE / ZN 12

2. Material :

Mild Steel Electro galvanized

3. Application :

Clamping plain or insulated pipes to standard channel supports such as trapeze hangers, floor stands and wall brackets.

4. Features:

Full range of intermediate sizes available to ensure a simple and effective support and clamping arrangement for insulated / non insulated piping.

Optional U Bolt with rubber sleeve / epoxy coated / PVC coated / Brass Construction / Stainless Steel Construction.

5. Selection / Ordering:

- a) Bare piping : OD.
- b) Insulated Piping : Effective OD or pipe size plus insulation thickness.
- c) If Starline Rubber Support Inserts are proposed to be used, then Model Number of Starline Rubber Support.
- d) Material Specs :
 1. EPDM lined: (Suffix "R").
 2. Epoxy powder coated finish (Suffix "EPC").
 3. Hot dip galvanized (Suffix "HDG")
 4. Stainless Steel (Suffix "SS")

Note:

- Due to policy of continual improvement, the specifications are subject to change without prior notice
- Measurements are subject to 5% tolerance

