

**Head Office:**  
MARS Complex, Poothole Road, Thrissur, Kerala  
India - 680 004. Ph: +91 487-2385001, 2385002  
E-mail: customerservice@starline.in  
www.starlineenterprises.in



**Factory:**  
Sree Sai Krithika Industrial Estate  
4 / 293, S.F. No. 221 & 91, Sreerapalayam,  
Post - Podipalayam, Coimbatore, Tamil Nadu,  
India - 641 105

## Spring Hanger 50 mm Standard Deflection

Catalogue Number : 9000104 : Rev. 01 Dated 07-10-2014

### 1. Compliance:

- a) Designed to BS 1726 -1 : 1987
- b) Tolerance to BS 1726-1 : 2002
- c) SAE and Ashrae Guidelines for Vibration Isolation

### 2. Application:

- a) Spring Hangers are used for isolation of vibration produced by suspended mechanical equipment, low speed suspended fan, transformers, duct work, piping etc... These are especially recommended for isolating any suspended source of audible / inaudible noise and vibration with minimum static deflection requirement exceeding 25 mm and upto 50 mm.

### 3. Product Features:

- a) Spring diameter to height ratios are designed to ensure that spring will never buckle even when fully loaded.
- b) Suspension rod misalignment (30 degree arc) is compensated in hanger design.
- c) Locking rubber bush centralizes the spring and prevents dislocation.
- d) Springs are powder coated with appropriate color coding to facilitate identification.
- e) Frame is made of G.I. steel and powder coated to 100 microns paint thickness (exceeds 1000 hours of salt spray test) and conforming to ASTM B-117.

Option :

Frame Hot Dip Galvanized. Part Number prefix with "HDG".

Spring Neoprene Coated. Part Number prefix with "N".

Spring Plastic Dip Coated. Part Number prefix with "P".

- f) Isolation Brackets are capable of overloading upto 500%.

### 4. Selection / Ordering:

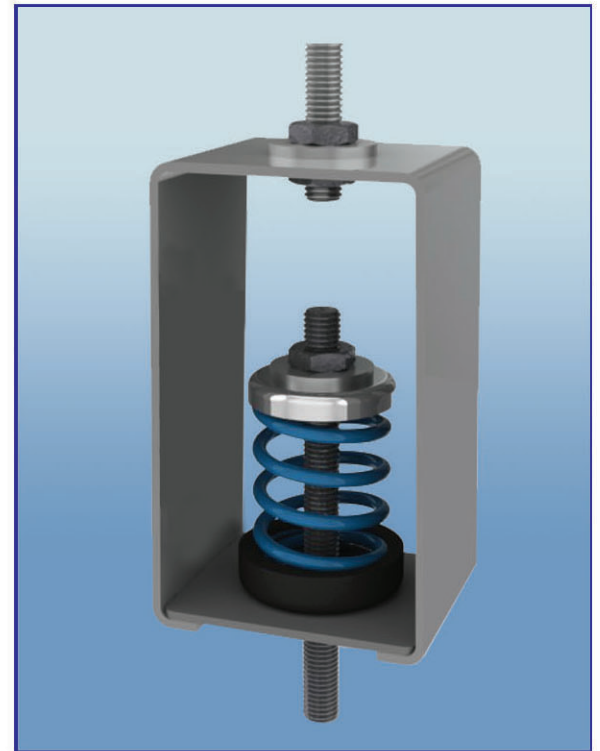
- a) Point load (Calculated to include all variables such as weight of water in pipe lines etc if applicable).

### 5. Installation Guide lines:

Included in packaging.

### 6. Options:

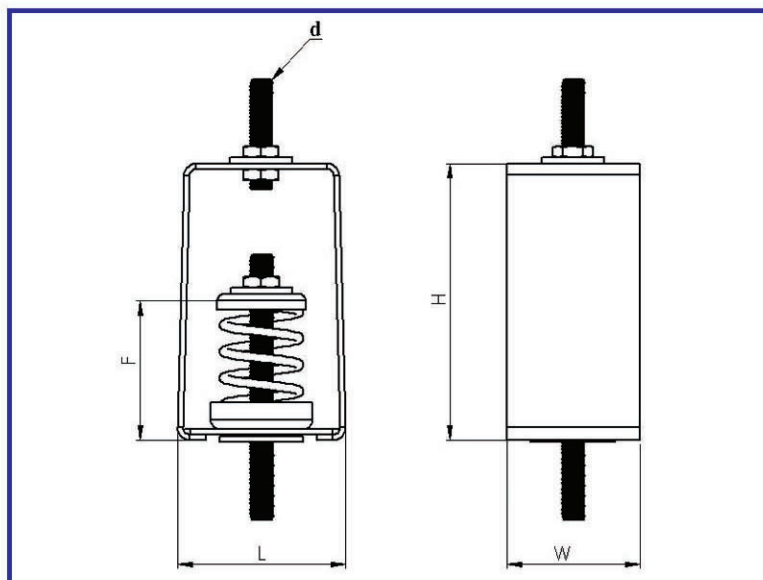
- a) Spring Hangers of Higher Capacity and Deflection shall be Engineered as per Specific Requirements. Nomenclature for Special Engineered Spring Hangers shall be SSH(XXX - Deflection-G(XXXXX-Load))



**SELECTION TABLE FOR 50 MM DEFLECTION SPRING HANGERS** (Table No: C-11-01)

Isolator Model	Rated Load (kg)	Spring Colours	Dimensions (mm)				
			L	W	F	H	d
SSH50-B25	25	Green	77	60	118	170	M12
SSH50-B50	50	Black					
SSH50-B75	75	Yellow					
SSH50-B100	100	Blue					
SSH50-B150	150	Grey					
SSH50-C200	200	Orange	94	80	127	200	M16
SSH50-C250	250	Black					
SSH50-C300	300	Yellow	94	80	135	200	M16
SSH50-C400	400	Blue					
SSH50-C500	500	Grey					
SSH50-C600	600	Brown					
SSH50-G700	700	Green	107	95	163	240	M20
SSH50-G800	800	Pink					
SSH50-G1000	1000	White					
SSH50-G1200	1200	Purple	07	95	163	260	M24
SSH50-G1400	1400	Green					
SSH50-G1600	1600	Pink	260	100	200	360	M30
SSH50-G2000	2000	White					
SSH50-G2400	2400	Purple	260	100	200	385	M36
SSH50-G2800	2800	Yellow					

- Spring Hangers with higher capacity available on application.



**Spring Hanger**  
**50 mm Standard Deflection**

